



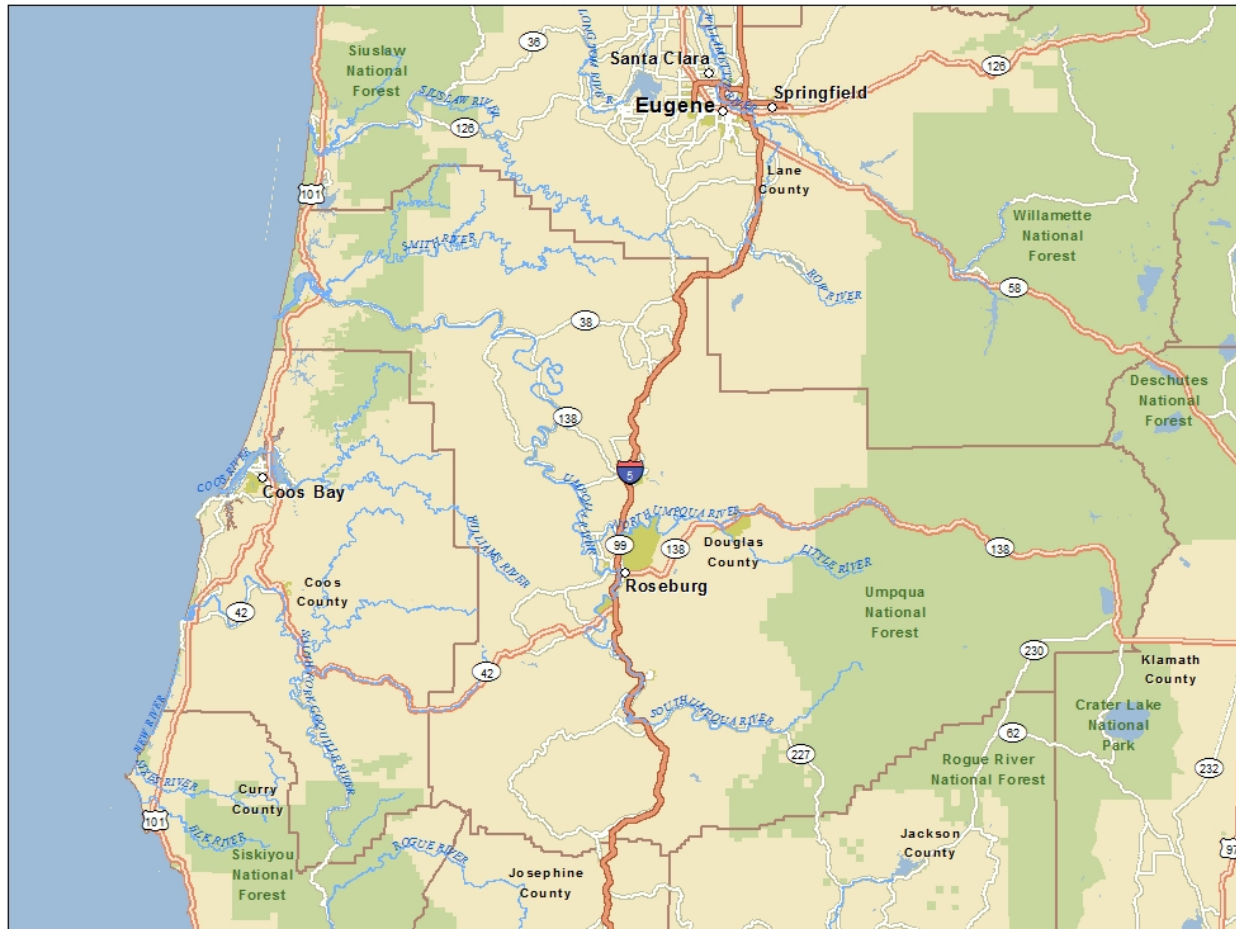
# **A Landowners Perspective: Large SWO Fires and Roseburg**

**Phil Adams  
Director of Timberlands**

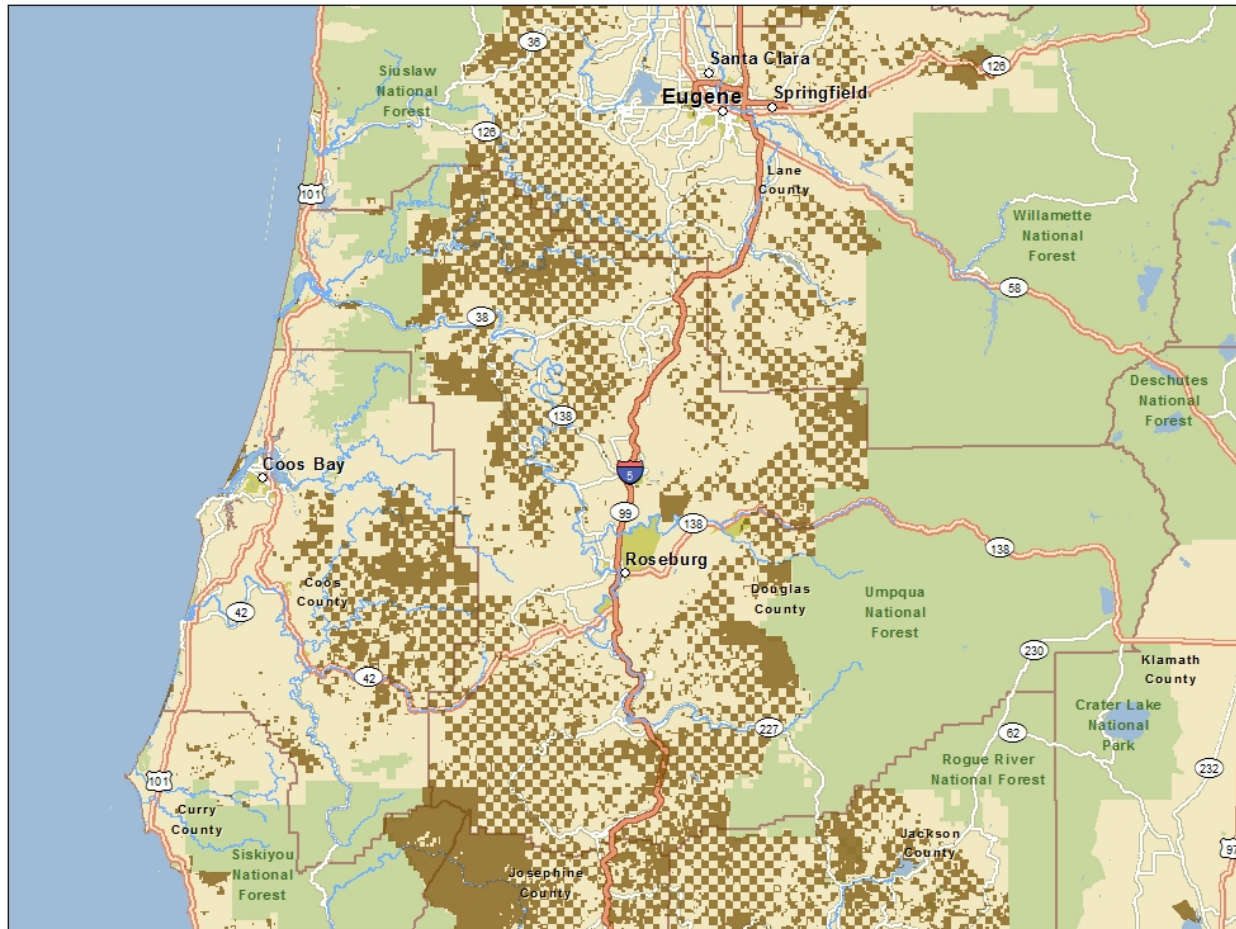
- Reflections/perspectives from 5 years of Large Fire impacts
- Thoughts Going Forward



# RRC Working Circle

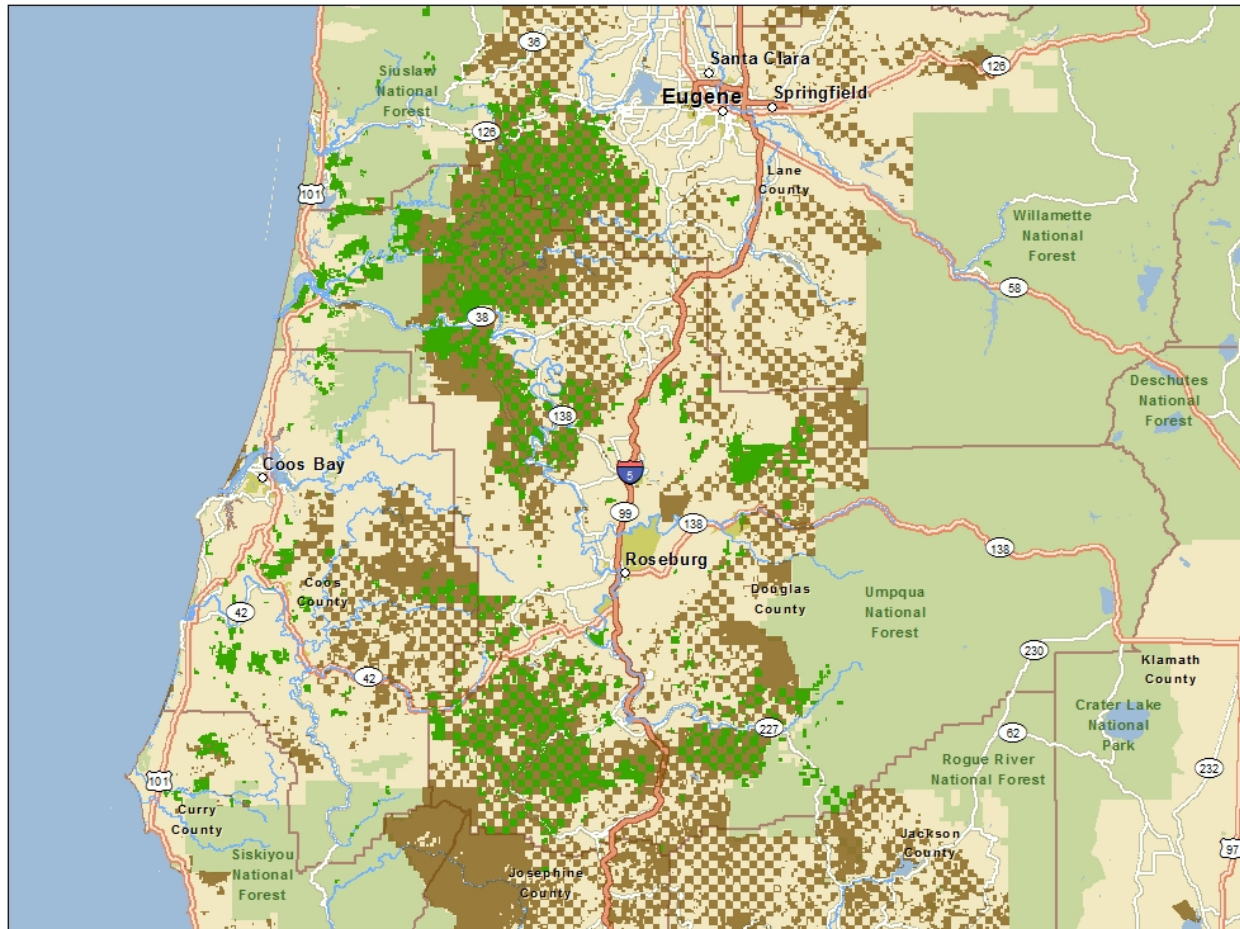


# The “O&C Lands” Footprint





# Roseburg Lands



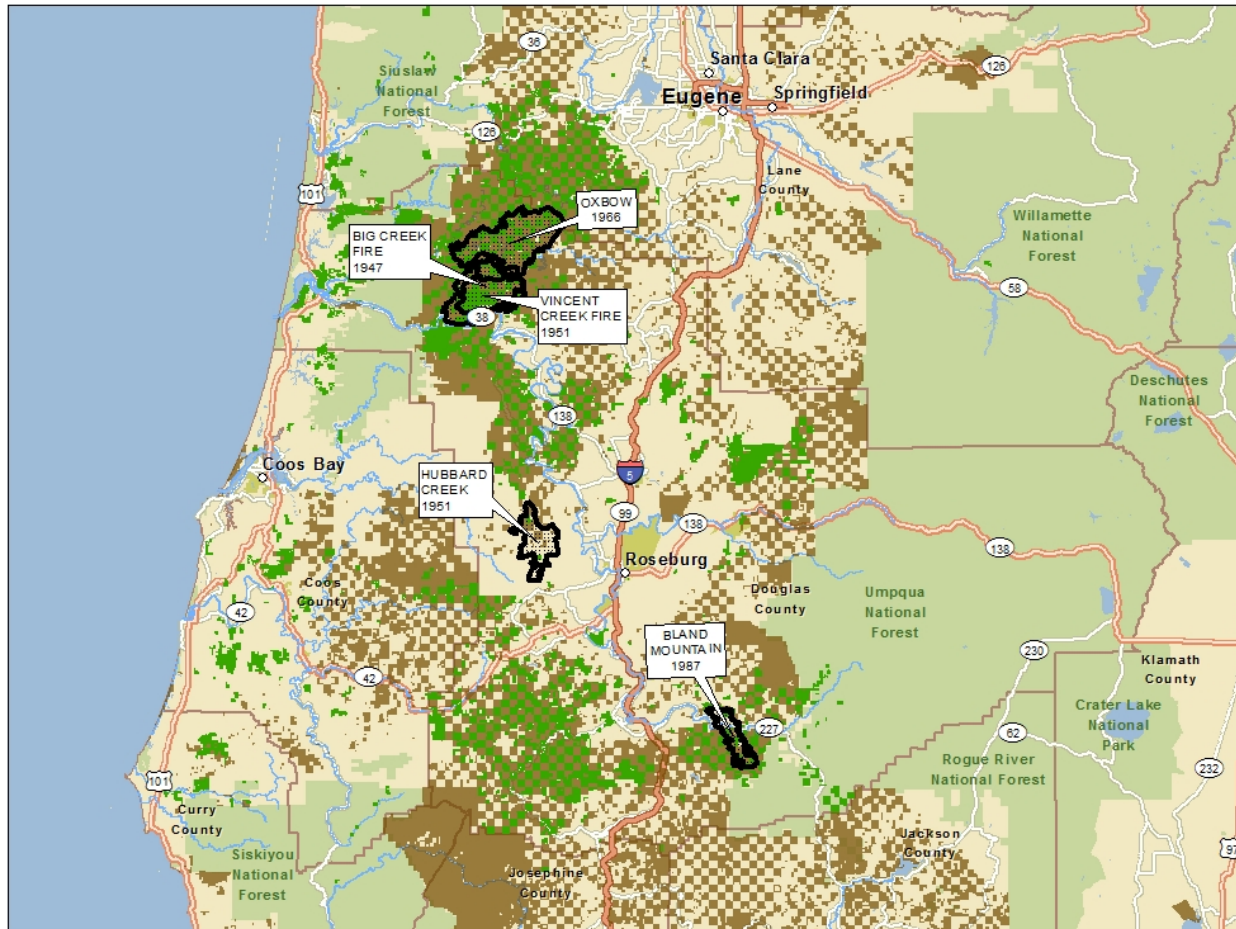
# Three Things About Large Fires in SWO O&C

---

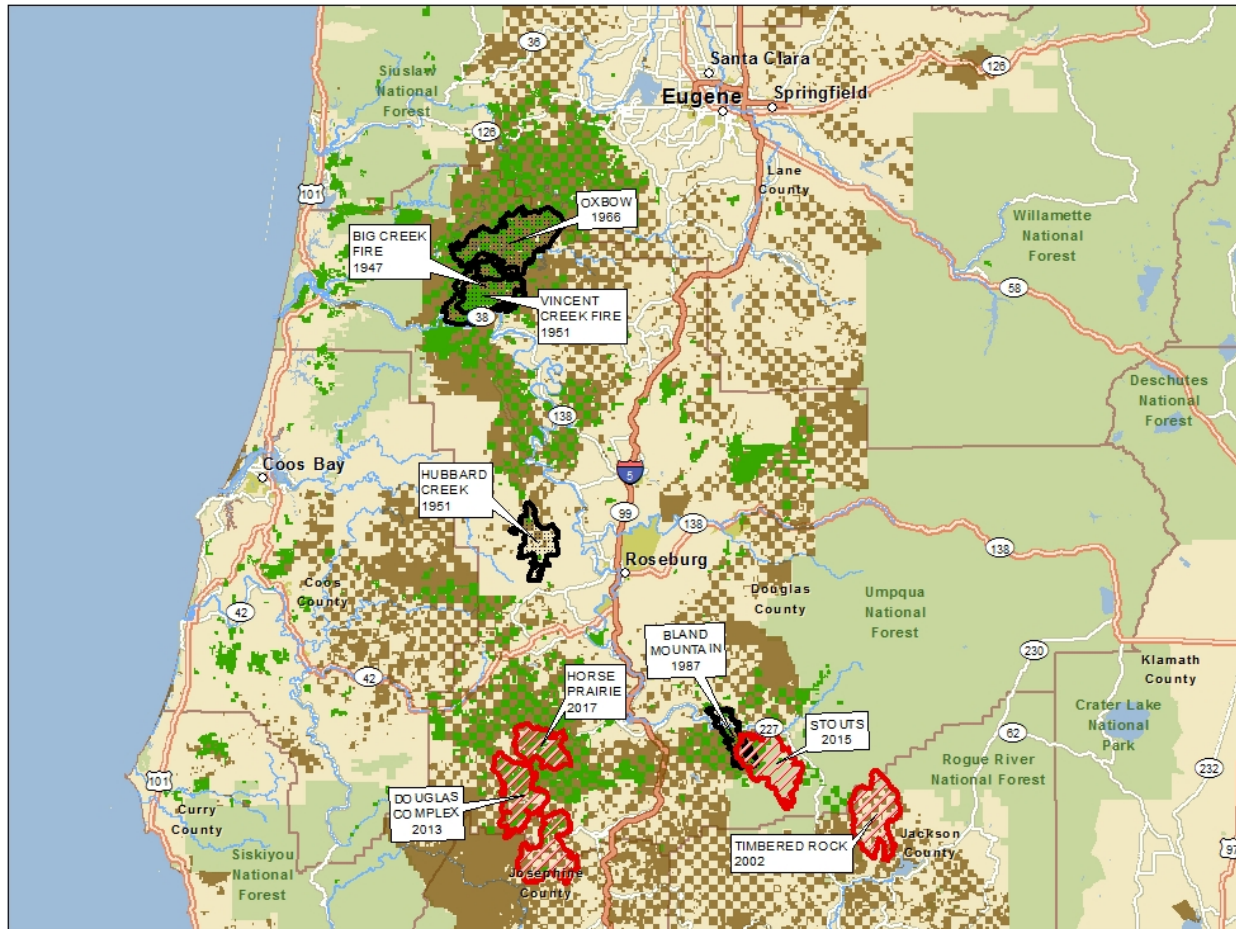
- #1- Catastrophic Events Suck.... But they happen
- Indicate system breakdown-
- our primary emphasis addressing prevention was broken and suppression efforts were overwhelmed



# Historic O&C Fires



# Recent O&C Fires



# Roseburg Large Fire Impact Summary- 2013-2017

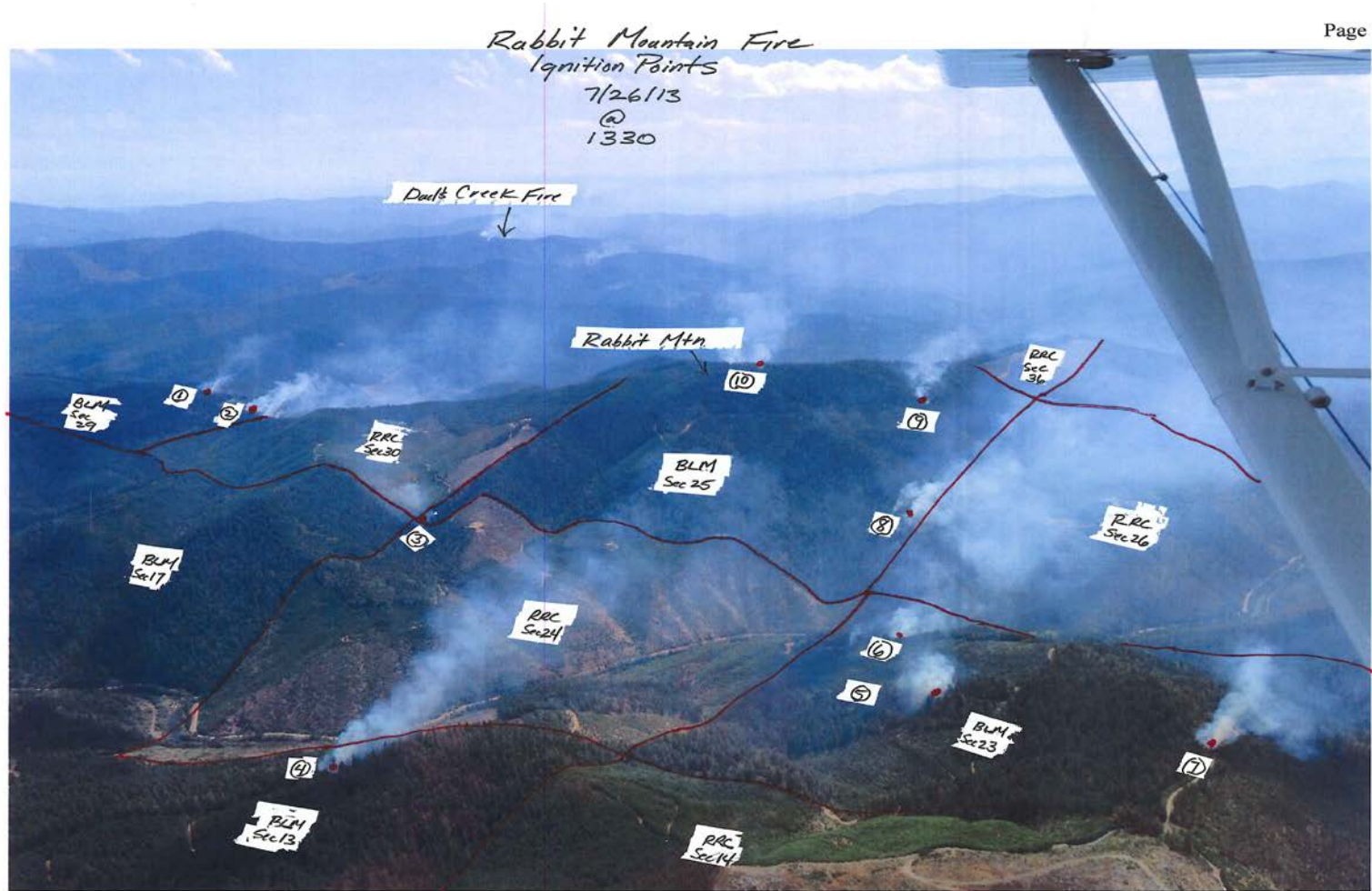
<u>Year</u>	<u>Incident</u>	<u>Acres Involved</u>	<u>Cause</u>
2013	Douglas Complex	~11,000	Lightning
2015	Stouts	~4,500	Human- Negligence
2017	Horse Prairie	~ <u>5,500</u>	Human- Negligence
		<b>~21,000 acres</b>	

**~33 square miles!!**





# Overwhelmed



# Recent SWO Firestorm Events

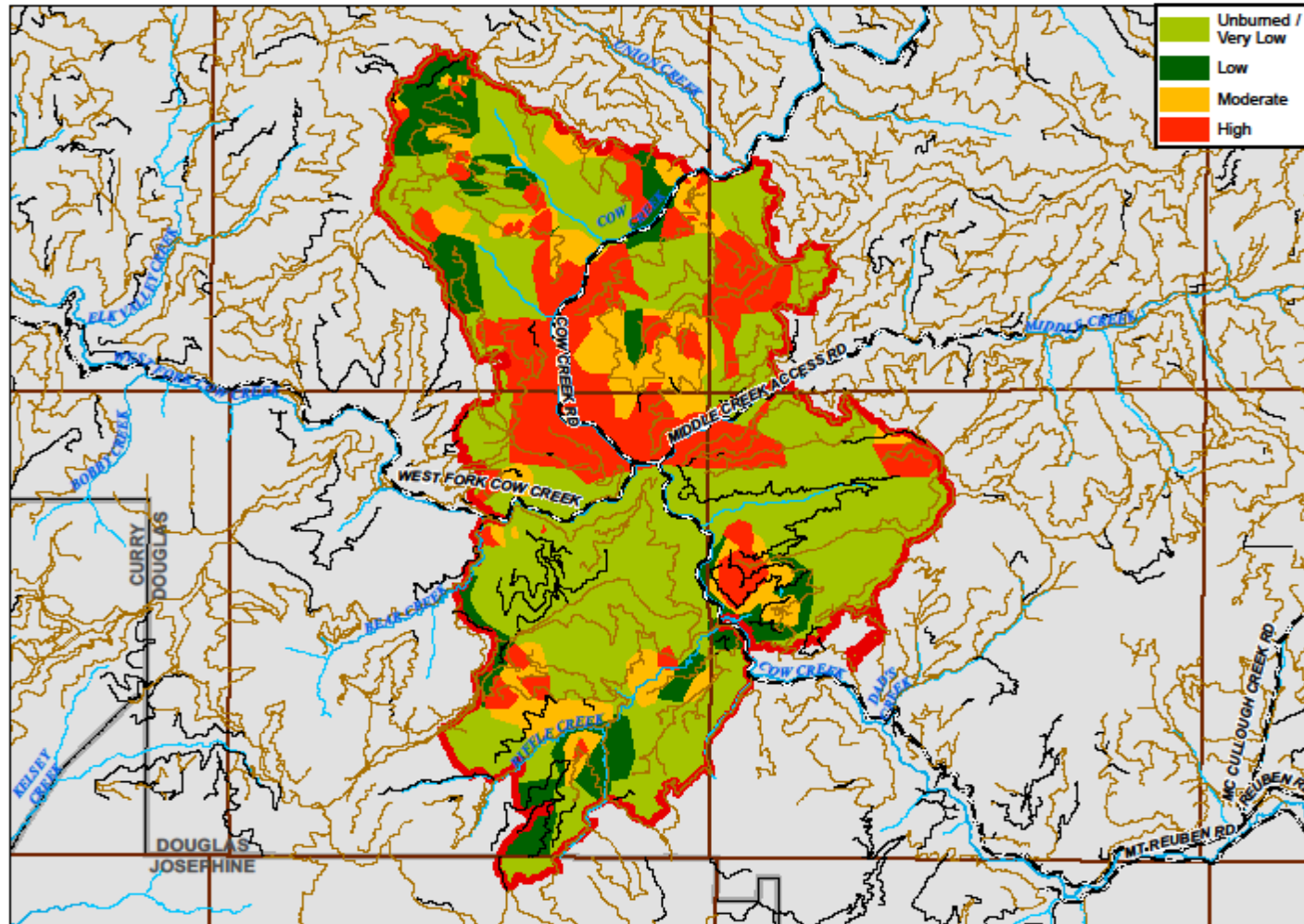
**2013- Douglas Complex**



**2015- Stouts**

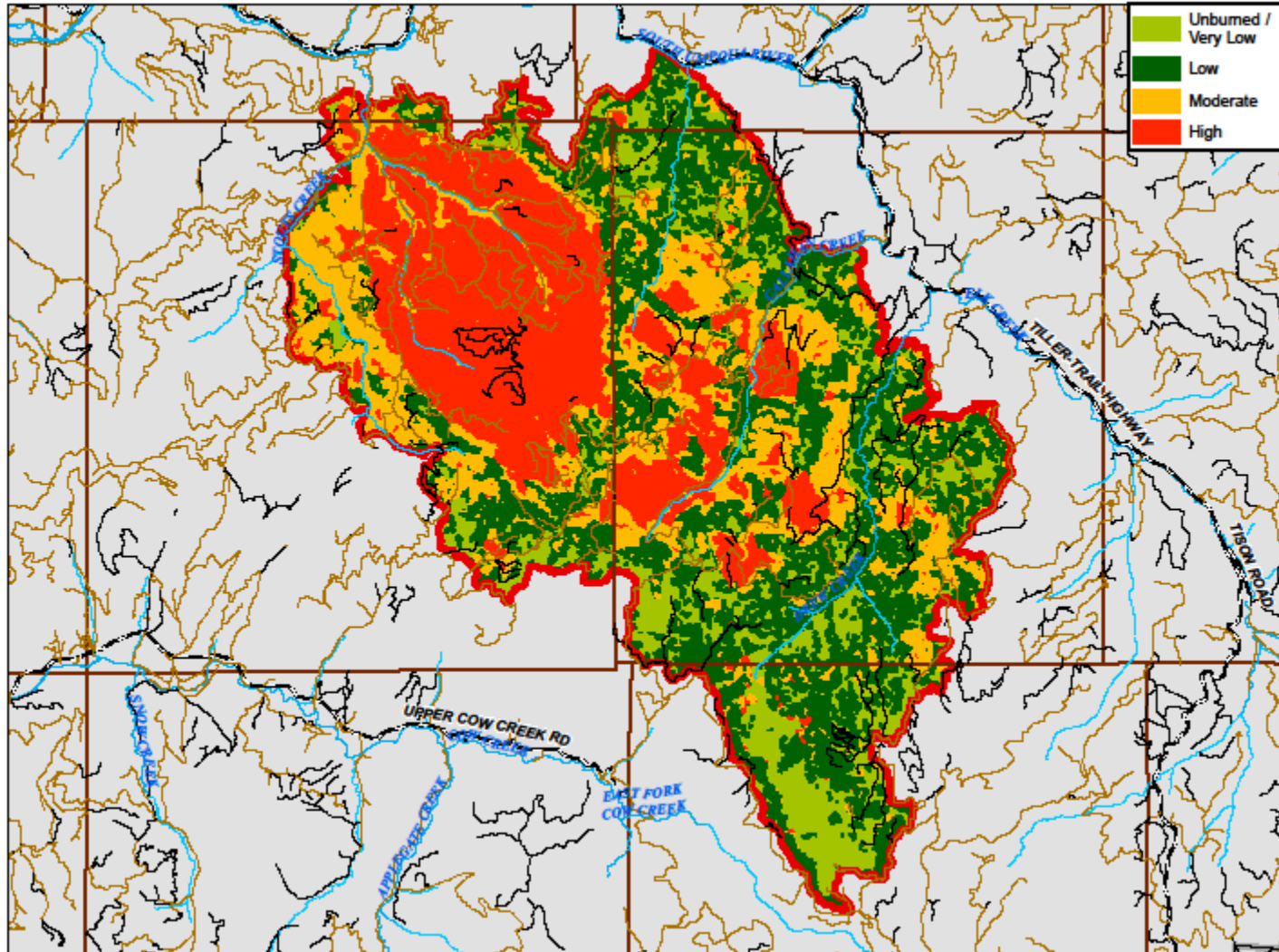


# Douglas Complex-Rabbit Mountain Fire





# Stouts Creek Fire



# Integration into ICS- Landowners Add Value



# Capitalized Local Contractor Pool





# Innovative Ideas/Safe Productivity



# Shoulder to Shoulder Accomplishment



# Large Fires in SWO O&C

- #2- Restoration Sucks!
  - BUT it HAS to happen....
    - every acre has value
  - It has to happen quickly...
    - time is the enemy
  - It has to follow known active management principles...
    - Access and safety, fuels reduction, reforestation





# Principle 1- Safe Road Access is Essential!





# Hazard Trees= Safety Issue





# Principle 2- The “Black and Dead” Forest Must Be Removed

- Managed Stand –Premerchantable Timber -25 years old
- Unmanaged Stand- Merchantable Timber-





# Salvage Harvest Has Multiple Benefits

- Ridge top Fuel Breaks
- Returns Value to Landowner





# Salvage Harvest Reduces Fuel Loads and Prepares Areas for Planting

- Before- Lots of Dead Wood and Shade
- After- Future Fuel Removed and Area Ready for Planting



# Principle 3- Prompt Reforestation Provides Long Term Benefit to the Forest





# 2014-2017- Roseburg has planted over 5 million seedlings...One Tree at a Time!





- #2a- Restoration is Expensive...and that Sucks also!
  - Represent an unscheduled conversion
    - All costs are higher than expected and they are compounded



# A Dead and Black Forest- Loss Can Be Quantified



# RRC 3 Year Preliminary Costs/Loss Large SWO Fires

## Rabbit Mtn and Stouts Creek Fires 2013-2016

- **Hard Costs**

- Unscheduled Capital Outlays -\$12-15MM
  - Reforestation costs(net of salvage acres)
  - Accelerated road and infrastructure repair/construction

- **Investment Loss**

- Reduction in Appraised Value (NPV) -\$12-13MM
  - Current rotation only

- **Operations Costs**

- Replacement of Future Volume  
Contribution -\$ 9-11MM
  - -Incremental replacement cost of  
180 MMBF lost from harvest schedule

- **Total Enterprise Cost** **-\$33-39MM**





# Large Fires in SWO O&C

- #3- Public Lands Management Plans.....Sigh
  - Adjacent landowners and Fire Managers voice not heard advocating for more aggressive inclusion of Active management concepts
    - Rigid/Prescriptive Policy and Regulation- constrains project development at Staff level
    - Bifurcated Performance Metrics- ensures disincentives at Manager level
    - Litigation Exposures/Allocation of Resources- establishes minimal action directives at Executive level
  - New Era of Fuel Types we must come to grips with



# **WITHOUT ACTIVE MANAGEMENT large areas on BLM will revert to “snag patches and brush fields”**

**BLM Lands- Rabbit Mtn Fire - 2013**



**BLM Lands- Timber Rock Fire- 2002**





# The New Reality





# High Hazard Fuel Areas





# Why not grow a new forest?





# Trees not Brush



# Going Forward- O&C Prevention

Providing Adequate Level of Protection is Reinforced

- Doubling down on Prevention Programs and Risk Assessed Initial Attack Suppression is Paramount
  - More crews, targeted equipment contracts, conditioned based staging
- Higher Costs and risk reduction must be passed on to Landowners and GP
  - Higher District and State Fire budgets
    - Review of BLM OFLPF Assessments
    - High hazard fuel assessments need to be considered
  - Condition based public access closures



# Going Forward- O&C Forest Resiliency?

---

## O&C Intersection of Forests, People and Values

- Politics and Policies will determine effectiveness for both Private and Public Lands
  - Oregon Smoke Management Rules
  - NWFP RMPs, ESA
  - Surrogate Based Public Input





- Operationally, landscape level “Western States” plans, models, “good smoke” only thinking needs to be tempered with smart unit/basin level fuel reduction prescriptions .....including the S Word
  - Anchor points “conditioned” for prescribed fire follow up
  - Strategic lateral ridge fuel breaks
  - Fuel chip hardwood/conifer ingrowth treatments

